

June 2023

# Teme TRIANGLE

Clifton upon Teme • The Shelsleys • Lower Sapey



*Families united in Shelsley Beauchamp to celebrate the Coronation of King Charles*

## In this edition

- King Charles III Coronation - local celebrations: 11-page special
- Local florists make Westminster Abbey bloom
- Shelsley cyclists raise £90k for Parkinson's
- Clifton author's new book
- Plus... your guide to what's on locally this summer

Visit the website

[www.temetriangle.net](http://www.temetriangle.net)

FREE to Residents

FULL COLOUR  
ISSUE



**Shelsley fundraiser takes the plunge:** Brave Shelsley Kings resident Kate Hurst took her first ever tandem skydive on 30 April, with the Hinton Skydiving Centre in Brackley. The jump raised more than £600 for the Worcestershire Breast Cancer Unit. Kate said: "I really enjoyed it, despite being scared. Thanks to everyone for the sponsorship!"

#### YOUR TEME TRIANGLE TEAM

<b>MAIN EDITORIAL MAILBOX</b> EDITOR THIS ISSUE	<b>editortemetriangle@gmail.com</b> Michelle Whitefoot
CLIFTON NEWS / WEBSITE	Jerry Johns: 01886 812304 crown.house@polperropress.co.uk
SHELSLEYS NEWS	Michelle Whitefoot: 01886 812779 michelle@whitefootpr.co.uk  Louise Hutton: 01299 896126 louise@stroyd-hutton.com
LOWER SAPEY NEWS	Marion West: 01886 853249 marionjeanwest@googlemail.com
ADVERTISING/SPONSORSHIP	Andrew and Anna Brazier: 01886 887898 teme.triangle@thebraziers.co.uk

*Opinions expressed in this publication are not necessarily those of the editorial team. Teme Triangle is not responsible for goods and services advertised. Contributions may be edited at the discretion of the editor.*

**Front cover picture:** Val Jones (L) of Shelsley Kings welcomed her son Adam, his wife Sinéad and grandsons Rhodri and Alfie all the way from Manchester, to join in the parish Coronation celebrations at the Village Hall. (Read more local Coronation event coverage from page 16.)

## A WARM WELCOME to the June 2023 edition of Teme Triangle

To mark the very colourful, community-minded month we've just enjoyed, we are pleased to bring you this bumper, all-colour edition of *Teme Triangle*! You'll find our 11-page round-up of all our parishes' Coronation news from page 16. We also review other special events and magnificent achievements that have taken place around our Valley, and highlight the upcoming local activities to look forward to in the coming weeks.

We've also been asked what's happened to 'TemeBay', our window for local pre-loved items for sale or free? Well it still exists - just pending your listings! Send details, plus local news and photos, to [editortemetriangle@gmail.com](mailto:editortemetriangle@gmail.com) by the second Friday of each month. Enjoy the start of summer!



## 'JOGLE' RIDE RAISES £90,000 FOR PARKINSON'S RESEARCH

Two locals took a new spin on Coronation Day (6 May) when they joined a team riding their bicycles from John O'Groats to Lands End - covering over 900 miles in 10 days and raising an outstanding £90,000 for Parkinson's UK research.

Mark Skipp from Shelsley Beauchamp and Mark Whittaker of Martley Road joined seven other riders in an epic ride for non-cyclists. Challenges included going over the Kirkstone Pass in the Lake District the hard way, and a 110-mile day from Ludlow to Wells in Somerset, via the Wye Valley climb. Mark Whittaker said: "One of many highlights was being joined by Olympic gold medalist Sir Chris Hoy for 30 miles - he is quite quick! We had plenty of numb hands, tired legs and sore other parts by the end!"

Several members of the team have family affected by Parkinson's, a debilitating, progressive neurological disease with no current cure. One in 37 people will be diagnosed with the disease. All money donated will go towards finding a cure for this terrible disease: visit: <https://www.justgiving.com/fundraising/henry-deakin> .





## GRANTS AVAILABLE FROM THE SHELSLEYS' EDUCATIONAL CHARITY

Are you, or is one of your children, planning to start a new stage of education this autumn, and do you live within the civil parish of the Shelsleys? If so you may be interested in this local charity. The income of the charity is used to support the education (e.g. to assist in the purchase of uniforms, books and sports equipment) of children and young people under the age of 25 who live (or whose parents/guardians live) within the parish of the Shelsleys.

The Trustees will be meeting in August to consider making small grants to eligible pupils or students. These are those either attending primary school for the first time or those starting secondary school/college or university in autumn 2023. Applications for grants should be made as soon as possible in writing, and in any event before the end of the summer term. All enquiries and applications should be sent by email to the Clerk to the Trustees, Jude Damerell, at [judith\\_damerell@hotmail.com](mailto:judith_damerell@hotmail.com) or by post to Jude Damerell, Somer Barns, Camp Lane, Shelsley Beauchamp WR6 6JQ.

## LOCAL DANCERS TAKE TO STAGE IN MAJOR BIRMINGHAM SHOW



Attitude Dance Studios, based at Mill Farm Country Retail in Stanford Bridge, was selected to perform at the U.Dance West Midlands 2023 show at the end of April. The students worked hard to prepare a contemporary piece with choreographer and principal, Kara Soper, to create 'Somnus' a dance which explores ideas of night and sleep.

"Performing at the Patrick Theatre inside the Birmingham Hippodrome was an incredible achievement for our performance team," said Kara.

"We were so honoured to have been selected to take part in such a brilliant day and to share the stage alongside such outstanding young dancers from across the West Midlands."

## CHRISTIAN AID EVENTS IN JUNE

Residents are invited to support the following remaining Christian Aid events within our parishes this month, as part of this year's national initiative. Everyone is welcome:

- Saturday 3 June 9.30-11.30am: Big Breakfast at The Old House, 20 The Village, Clifton upon Teme (the Dipples'). Full English with vegetarian options available. Please book in advance by email on [mjdipple@btinternet.com](mailto:mjdipple@btinternet.com)
- Sunday 11 June 2.30-5pm: Open Garden and Afternoon Tea at Ayngstree House, Clifton

## CHANCE TO JOIN CLIFTON'S GUIDES, BROWNIES OR RAINBOWS

Clifton upon Teme's Girlguiding groups are going from strength to strength, and inviting new members to join in the fun.

Leader Angie Griffiths confirmed: "We run our three groups - Rainbows, Brownies & Guides - in Clifton upon Teme village, at the hut in the play park. Rainbows are age 4 to 7, and Brownies age 7 to 10. Both groups meet at the hut on Wednesday evenings from 5.30pm to 7pm, when we do crafts, sports, activities and days out."

Clifton's Guides, for girls age 10 to 15+ years, meet on Monday evenings usually from 6.15pm to 7.45pm. "At Guides we watch and play sports from netball, football, cricket and axe throwing, to swimming, climbing and dancing. We also do crafts like bird box building and clay sculpturing; gardening; go on adventures like PGL; and enjoy days out to the Snow Dome, Alton Towers and more," added Angie.



"We are up for any challenges and always open to ideas and offers from people as long as its safe to do within the Guiding realms. So if anyone has anything they can offer we will always take them up on things."

Call Angie on 07957 462519 or email [angiegriffiths@aol.com](mailto:angiegriffiths@aol.com) for further details.

**NIC SPROSON  
THE OPTICIAN**

Contact Lens Specialists

\* Patient Car Park \*

52 Barbourne Road, Worcester

**Tel: 01905 27327**

[www.nicsprosontheoptician.co.uk](http://www.nicsprosontheoptician.co.uk)

*enhanced movement*  
**studio**

[WWW.ENHANCEDMOVEMENTSTUDIO.CO.UK](http://WWW.ENHANCEDMOVEMENTSTUDIO.CO.UK)

*pilates*      *couch to 5k*

MONDAY 8:30AM	LEAVING FROM
TUESDAY 6:30PM	MILL FARM
THURSDAY 8:30AM	STANFORD BRIDGE
THURSDAY 6:30PM	EVERY MONDAY
FRIDAY 8AM	6:30PM
	(FROM 25TH OCTOBER)
	RUN CLUB
NOW AT	EVERY WEDNESDAY
PITLANDS	(FROM 27TH OCTOBER)
CLIFTON-ON-TEME	£5/SESSION

PLEASE ENQUIRE ABOUT  
'COUCH TO 5K & RUN CLUB'

 07989 535 757 *emg*

David Ward  
**firewood**

Do you need a dependable consistent quality supply of seasoned or kiln dried hardwood and softwood firewood?

Cut and split to suit and delivered in breathable 1.2-cubic metre bags, so no need to restack.

Small delivery vehicle, fitted with crane, can deliver to most locations and situations.

CALL DAVID TO DISCUSS YOUR REQUIREMENTS:  
Mobile: 07866 441154



**The Apple Tree Kitchen**

01886 812 431  
WR6 6DX

Set in the beautiful grounds of Pitlands Farm Holidays  
| Fully licensed | Breakfasts | Lunches | Cakes | Coffees |  
| Afternoon Teas | Gardens & Grounds |  
| Children's Play Ground |  
| Function room available with catering  
for every occasion |

Open Thursday - Sunday 9:30am - 5:00pm

[www.theappletreekitchen.co.uk](http://www.theappletreekitchen.co.uk)  
[info@theappletreekitchen.co.uk](mailto:info@theappletreekitchen.co.uk)

**Meadows  
Soft Furnishings**

by Tracey Birks

Bespoke handmade curtains, blinds,  
soft furnishings and lampshades  
designed and made for you

No obligation home consultation

[tracey@meadows-soft-furnishings.co.uk](mailto:tracey@meadows-soft-furnishings.co.uk)  
[www.meadows-soft-furnishings.co.uk](http://www.meadows-soft-furnishings.co.uk)  
01886 812583 or 07831 818104



**HainesHeating**

07534 700 932



**Oil & Gas Boiler service  
& repair specialist**

**Clifton-On-Teme**  
[www.ahainesheating.co.uk](http://www.ahainesheating.co.uk)



**A.M. JONES**

**Harpley Works  
Clifton-on-Teme**

- MOT Repairs
- Servicing
- Accident Repairs

- Tyres
- Batteries
- Exhausts

**Tel/Fax: 01886 853 530**  
**Mobile: 07970000881**

**Hallmark Whatley Hulme**  
Solicitors

Specialists in Private Client Services -  
Wills, Estates, Powers of Attorney  
and Court of Protection

A modern personal service in a digital world

Home visits if required  
Free parking for consultations

*Accredited member of  
Solicitors for the Elderly*

Contact the team on 01905 726600  
or email  
[enquirieshwh@hallmarkhulme.co.uk](mailto:enquirieshwh@hallmarkhulme.co.uk)

We also offer the following legal services:  
Property, Employment and  
Civil Disputes / Litigation

[www.hallmarkhulme.co.uk](http://www.hallmarkhulme.co.uk)

**Professional Dog  
Walking  
& PetCare Services.**



**PETSADVENTURES**  
*Passionate about caring for your pets*

[www.petsadventures.com](http://www.petsadventures.com)

Contact Ruth on: 07736151130 or  
email: [ruth@petsadventures.com](mailto:ruth@petsadventures.com)

We are delighted to offer the following  
services in the WR6 area:

-  Professional Dog Walking
-  Dog Home Boarding
-  Doggy Daycare
-  Pet Companion & Home Visits
-  Pet Taxi Service
-  Chicken & Small Animal Boarding





**A. H. CALDICOTT & SONS**

**Funeral Directors**

15 MARKET STREET,  
TENBURY WELLS, WORCESTERSHIRE  
TELEPHONE: 01584 810281  
FAX: 01584 811420

*A family  
run business  
established 1919*

*Burials  
Cremations  
Chapel of Rest*



- Woodburning & Multifuel Stoves
- Stove Spares & Repairs
- Glass, Ropes, Bricks, Baffles, Cleaners
- Chimney Liner Kits & Flue Pipes
- Kiln Dried Logs, Kindling and Firelighters

**01886 812452**  
[www.is-stoves.co.uk](http://www.is-stoves.co.uk)

Showroom & Online Shop

Steps Farm  
Clifton Upon Teme  
Worcester  
WR6 6EN



# JEREMY MASSEY

## Qualified Electrician

**NICEIC** Registered  
Electrician  
- BS7671

- ✓ Household Electrical work
- ✓ Fast, Reliable & Friendly
- ✓ Very high standards met
- ✓ Inspection & Testing

Contact: 01886 888493

## AQUA CLEANSING Ltd

### SEPTIC TANK EMPTYING

- Cesspool & Pump Stations
- Soakaways 
- Blockage Clearance
- Sewage Treatment Engineers
- Pumps, Compressors & Servicing
- CCTV Drainage Surveys

[www.aquacleansingltd.co.uk](http://www.aquacleansingltd.co.uk)

[enquiries@aquacleansing.co.uk](mailto:enquiries@aquacleansing.co.uk)

Call us now for free advice & quotation

**01886 888471**

Berrow Green Road, Martley, Worcester WR6 6PQ

*Fast reliable service established for over 30 years*



### Feet First Foot Health Clinic

**Treatment for:** corns, callus, cracked heels, verrucas, fungal infections, ingrown toenails. Orthotic insoles specialist.

Ground floor clinic just outside of Bromyard with onsite parking. Home visits available.

*Helping to keep people on their feet for over 11 years!*

Tel: 07580160997



Visit us at Mill Farm, Stanford Bridge,  
for beauty and holistic treatments

Please call for an appointment or  
more information on 07964 176747  
[www.purethyme.co.uk](http://www.purethyme.co.uk)

## PHIL GRAY

### Dairyman / Newsagent

National... Daily... Sunday & Local Papers  
... Magazines... All Milk...  
... Dairy Products... Eggs... Soft Drinks  
... & Waters etc.

Let your Milkman do the Walking  
**01584 881385 / phil@eardiston.com**

## BARNHALL

### Cleaning & Maintenance

Phone 07735 401102

24 hour Drain Unblocking	External Decorating
Paths/Patio Cleaning	Guttering Repairs
Gutter Cleaning	Tile & Slate Roof Repairs
Fascia & UPVC Cleaning	Brick/Stone Repointing
Brick/Stone Cleaning	Drainage Installation

Email: barnhallpropertyservices@yahoo.com



Samantha Louise Hairdressing

01886 889248

Hairdressing and Barbering salon now open in Martley  
next to the Maylite trading estate

Senior Citizen discount available on a Wednesday starting  
from the 1st March 2020

Late Nights Wednesday and Thursday's until 8pm

Telephone the salon for all appointments and enquiries

## THE MANOR ARMS



### ABBERLEY

Open 12pm -11pm Every Day  
Call 01299 890300



A beautifully refurbished traditional village pub with locally  
sourced fresh food and ales.

*Our Head Chef sources top quality local ingredients to create  
traditional dishes and exciting specials.*

*Overnight stays in our beautiful rooms, available this Autumn!*

*You and your guests can be sure of a warm welcome, we look  
forward to seeing you soon.*

*Free function room available for local clubs, meetings,  
special events and parties.*

The Manor Arms Inn, Abberley Village, Worcestershire WR6 6BN

[www.themanorarms.co.uk](http://www.themanorarms.co.uk)

Follow us on Facebook and Twitter for news and events.



The Manor Arms Inn Abberley



ManorArmsInn

## Wichenford Mole Man

• Call - 07855 674760

- *Problems with Moles in the garden*
- *Professional, Reliable & Discreet*
- *Traditional methods only used*

## CANTS Tree Maintenance

For all your tree &  
garden needs

NPTC qualified, fully insured, professional tree surgeon

07513111588



Cantstreemaintenance



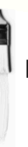
Cants\_tree\_maintenance

## C.L. GIBBS BUILDERS

EXTENSIONS • ALTERATIONS  
PLASTERING • UPVC WINDOWS  
ROOFING • TILING • LANDSCAPING  
FASCIAS • GUTTERING • STONE WORK

For all types of building work call your local  
family builder for advice and free estimate

01886 812 450  
07905 396 971



## ANDY PRITCHARD PAINTER & DECORATOR

Fully Qualified & Insured



All aspects of decorating undertaken, including  
Interiors, Exteriors, Tiling and Paper Hanging  
For free estimates & quality workmanship  
contact Andy.

07973 783240 - 01866 889001  
[pritchard378@btinternet.com](mailto:pritchard378@btinternet.com)

## CLIFTON WI ROUND-UP from Ruth Wilson

Andy Arnold talked about his adventures in the Karakoram National Park at the Clifton WI meeting in May. The photos he shared showed what an arduous and amazing trip it was. River bridges frequently washed away, steep mountain tracks with sheer drops, walking and sleeping on the glacier and very basic sanitation. The group of ten walkers was supported by 22 porters, with seven horsemen in charge of 16 horses or mules to carry the provisions. Andy shared photos of the stunning scenery including views of K2, the Trango Towers as well as an amazing fire rainbow and sun halo. Altitude and temperature variations from 30°C to -12°C, as well as walking on rough, rocky terrain, made the 17 days hike a challenging adventure. Many thanks to Andy for a fascinating talk.

On Saturday 10 June, the WI are holding a coffee morning and table top sale in Clifton Village hall, free entry and lots of cake! There may also be a few bargains!

The WI membership is continuing to grow. Our next meeting on 13 June will be led by Dot Millward who will demonstrate how to make a hand-tied posy and a buttonhole. If you would like to try your hand at this, or are thinking of joining the WI, please do come along at 7.30pm in Clifton Village Hall or email Ruth Wilson, [cliftonontemepres@wfedwi.org.uk](mailto:cliftonontemepres@wfedwi.org.uk).

## NORA PARSONS CENTRE THANK YOU

The Nora Parsons Day Centre in Wichenford has extended its thanks for the support it received for its recent Easter Fair. Hon. Secretary Ian Brown said: "So many people sold and purchased raffle tickets - our thanks to them all. Many others supplied prizes, cakes and jams. In addition Emily Fox (age 8) had a successful table selling her dyed products." Even the weather was on the Centre's side.

"The Easter Fair helps us support our members with lunches, coffee and tea, as well as a trip, and to keep our prices down to help our members in these hard times," explained Ian.

*Volante Strings*

Saint Mary's Church  
Stanford  
WR6 6SH

Friday 9th June  
7:30 pm

Adult £12.50  
Children free

Bookings:  
Megan 01299 896771 or  
07977191051

Robin 01886 853295

[st.marys1769@gmail.com](mailto:st.marys1769@gmail.com)

[volanteststringsorch@gmail.com](mailto:volanteststringsorch@gmail.com)

Sibelius: *Andante Festivo*

Warlock: *Capriol Suite*

Massenet: *Meditation*

## Music For Strings

Eleanor Percy  
Director



Gershwin: *Lullaby*

Bach: *Violin Concerto in E*

Handel: *Concerto Gross op6 no12*

## CLIFTON AUTHOR'S NEW BOOK ON MOTHER'S WARTIME LIFE AND LOVES

A Clifton-based author has published a fascinating new book about his mother's wartime experiences and her emotional love tangle with two RAF pilots, after discovering her hand-written notebooks and 1940 diary several years after her death.

Writer and journalist Jerry Johns, who usually publishes Cornish history books and biographies under his own Polperro Heritage Press imprint, took possession of his mother Jeanne's letters, private journals and diaries after his father Gerald died in 2001. As some of her writing implied it was intended for potential publication, author Jerry was inspired to share her story in *Jeanne's War*.

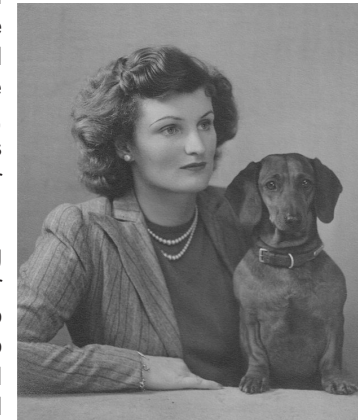
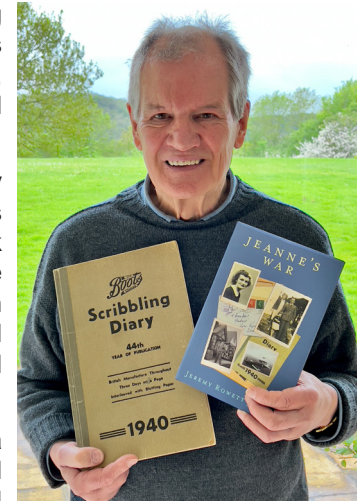
Jerry confirms: "My mother's 1940 diary reveals a vivid portrait of life at a time when Britain feared impending invasion by Germany, including the aerial dogfights that raged over the south coast. At the time Jeanne (*right, centre*) was unhappily married and with a small daughter, living near an air base in Sussex. With her husband being mostly away, she took in two courageous RAF pilots as lodgers – one of whom was to eventually become my father (*below right*), and the other, my godfather."

Jeanne also wrote about her upbringing, yielding interesting social insights. Jerry adds: "My mother was an only child of middle-class parents, who married against her father's wishes – only later to regret it. Her account reveals much about social attitudes towards sex, divorce and even unwanted pregnancy at the time, as well as the casual hedonism of the war years."

Jerry's 132-page hardback book, *Jeanne's War* (ISBN 9780995736849), contains many fascinating period photographs and is available from [www.polperropress.co.uk](http://www.polperropress.co.uk).

*Michelle Whitefoot*

**Jerry will be giving an illustrated talk about the book on Saturday 24 June in Clifton Village Hall from 6.30pm. Everyone welcome but please e-mail [crown.house@polperropress.co.uk](mailto:crown.house@polperropress.co.uk) if you plan to attend. Welcome drinks and light snacks provided.**







## COFFEE MORNINGS AT SHELSLEYS VH

Come and meet friends and neighbours old and new at the monthly Coffee Mornings at Shelsleys Village Hall!

Every third Saturday in the month - 10.30am til 12noon:  
Saturday 17 June / Saturday 15 July / Saturday 19 August

Refreshments, bring & buy (eg craft work, flowers, garden produce, unwanted items recycled). Plus activity for children

Enquiries to Dave Bates 07436 110793

All Saints Church  
Shelsley Beauchamp  
**Saturday 10th June**  
10am - 4pm  
10am to 4pm  
Come and enjoy our display of beautiful wedding dresses. Some from the early 1900's.

Music throughout the day  
Photos  
Flowers  
Historic records and information  
Vintage Cars  
Refreshments

At 4pm there will be short service of Renewal of Vows followed by a glasses of Fizz

Sunday Morning Service  
Hymns & Prayers  
11th June 10.30am

### CLIFTON AND THE SHELSLEYS PARISH COUNCIL MINUTES (MAY)

As the May Meetings / Annual Parish Meetings of both Clifton and Shelsleys Parish Councils were held later in the month than usual, the Minutes for both those meetings will be printed in the next (July/August) edition of *Teme Triangle*.

### ST KENELM'S CRAFTED IN CLAY AT UPPER SAPEY CLASSES



Clifton's Maurice Richards has created an impressive clay model of St Kenelm's Church, while attending sculpture classes led by Lynette Merrick. The classes are held at High House, Upper Sapey, on Tuesday mornings from 10am until 12.30pm. Lynette even offers transport to and from the classes and says anyone is welcome to join. For more information, call her on 07979 460686 or e-mail [lynmerrick80@gmail.com](mailto:lynmerrick80@gmail.com).

### LION'S MONTHLY QUIZZES FOR CHARITY

A series of monthly Sunday evening quizzes at the Lion Inn in Clifton run by quizmaster Tony Clark, have already raised hundreds of pounds for local charities. Usually held on the last Sunday of each month, the next quiz dates are: Sunday 25 June and Sunday 30 July at 7pm.



### ZED YOGA OFFERS 25% DISCOUNT FOR TEME TRIANGLE READERS

Zed Yoga, which holds well-established Yoga classes at Eastham, Broadwas and Hallow, is offering a 25% discount on your first session for readers quoting '*Teme Triangle*' on enquiry. Run by experienced Yoga instructor Zoe Herington, the welcoming classes are suitable for all aged 18 to 80+. Individual sessions and workshops are also available by arrangement.

Zoe told *Teme Triangle*: "Halfway up Woodbury Hill, the view across the Teme Valley is breathtaking... but busy modern life can leave little time for contemplation or wellbeing. Authentic Yoga is an opportunity to reconnect with our bodies; enhancing balance and general physical functioning through mindful movement. Traditional breathing practice calms the mind, creating - literally - a space to breathe! A sense of peace is revealed. And summer is a great time to begin or revisit your Yoga practice."

For more information, email Zoe at [info@zedyoga.co.uk](mailto:info@zedyoga.co.uk) (quoting '*Teme Triangle*') or visit [www.zedyoga.co.uk](http://www.zedyoga.co.uk).





## HUNTLANDS FARM BED & BREAKFAST AND UPHOLSTERY

[www.huntlandsfarm.co.uk](http://www.huntlandsfarm.co.uk)

Tel: 01886 821955 / 07828 286360

### OFFERS:

upholstery classes • upholstery commissions  
en suite b&b accommodation • wedding venue  
all in an idyllic, rural setting on a working farm.  
And a self-catering, 6 bedroom farmhouse on an  
adjacent farm, [www.moorhallfarm.co.uk](http://www.moorhallfarm.co.uk)

*Your hosts, Lucy, a custom upholsterer and  
Stephen, a passionate cook, guarantee you a comfy  
stay with freshly prepared, local food to enjoy.*

## WRIGHT CUT GARDEN & LANDSCAPING



- Decking specialists
- Garden fences
- Wooden gazebos / pergolas
- Sleeper beds / steps
- Shed roofs
- Plus much more .....

**No job too small  
Any job considered, please  
ring for more information.  
DBS checked and references  
available  
07940 704 864**

## Ombersley Family Dental Practice

MRS ANDY WRIGHT B.D.S. (EDIN)

A friendly private practice  
specializing in preventive  
dental care for all the  
family in a happy relaxed  
atmosphere.



**New patients welcome**

*Cosmetic treatments including tooth whitening  
Sports gum-shields for all ages in  
various colours and designs  
Same day emergency appointments  
Large car park*

**Tel: 01905 621881**

RACKS LANE, OMBERSLEY,  
NR DROITWICH, WORCS. WR9 0EN  
[www.ombersleyfamilydental.co.uk](http://www.ombersleyfamilydental.co.uk)

## Tipton Hall Riding School

Riding lessons for all ages and  
abilities.  
Hacking through wonderful  
countryside.  
Horse Livery-small friendly  
yard.

**Roger Benbow**  
BHS&I Reg. Instructor



Phone: 01885 488791  
mobile: 07792 358741  
[www.tiptonhallridingschool.com](http://www.tiptonhallridingschool.com)



## Clifton Upon Teme Nursery and Forest School

OPEN MONDAY-FRIDAY 7:30AM - 6PM  
**6 months to 5 years**

## Breakfast Club for Clifton Primary School

7:30AM - 8:30AM

Contact **Abi or Rachel** on  
**01886 812380** or  
Manager@cliftoneyc.co.uk



## MARTLEY OSTEOPATHS

**Do you suffer from back and neck pain?  
Do you need help with a sports injury?**

Call us now on 01886 889 002

Let our team of expert practitioners help you  
recover and get pain free

[www.osteopathiccentre.co.uk](http://www.osteopathiccentre.co.uk)

Osteopathy - Sports Massage Therapy



**Martley C E Primary  
Pre School**



Monday to Friday  
9am-3pm  
Ages 2-5 years

Breakfast Club 8-9am  
After School Club 3-6pm

**Pre-School**  
2yr old £15.50 (per session)  
3-5yr old £12.60 (per session)  
Sessions run from:  
9am - 12pm & 12pm - 3pm

**Ages 3-11 years**

**01886 889127**

**Wrap Around Care**  
Breakfast Club and  
After School Club runs  
from 3.00 pm - 6.00 pm  
Monday to Friday  
The cost is £2.75 per 30  
minute session

Registered for two to five year old funding and 30 hour extended  
entitlement funding

[www.martleyceprimaryschool.co.uk](http://www.martleyceprimaryschool.co.uk)

[jl115@martley-pri.worcs.sch.uk](mailto:jl115@martley-pri.worcs.sch.uk)



## SERVICED OFFICES AND WORKSHOPS AVAILABLE ON FLEXIBLE MONTHLY TERMS ALSO SMALL INDUSTRIAL UNITS

[www.maylite.co.uk](http://www.maylite.co.uk)

Please contact Kate Shrubbs on  
01886 888455 for more details

**MAYLITE Business Centre**

**MAYLITE TRADING ESTATE,  
MARTLEY WR6 6PQ**





# THE CORONATION OF KING CHARLES III

## LOCAL CELEBRATIONS ACROSS OUR PARISHES



### TEME VALLEY PLAYS KEY ROLE IN CORONATION FLORAL DISPLAYS

The floral decorations in Westminster Abbey for the Coronation were designed by local floral artist Shane Connolly (*pictured below*) who lives near Clifton, aided by Lily Fitch from Little Witley and working with flowers supplied by Kate Hurst of Camomile & Cornflowers in Shelsley Kings (*pictured far right*). Flowers were sourced from the four nations and supplied by 80 flower farmers who are members of 'Flowers from the Farm'. Kate Hurst was one of them, supplying flowers from her fields in Shelsley Kings. The Royal Horticultural Society also supplied flowers from its five gardens throughout the UK.



On the day of the Coronation itself, Shane was among the 2,200 guests who were invited to attend the service. "It was a bit surreal," he said afterwards, "but an extraordinary honour and pleasure."

When he originally discussed his plans with the RHS he was told they had two trees, one planted by HM Elizabeth II and one by the late Duke of Edinburgh, so branches were cut from them and used for the event, along with other plants grown in Britain. The cold spring weather helped prevent early blooming of some of the flowers that were featured.



Shane, who has worked for The King for more than 20 years, began planning for the event with his team in January this year, culminating with setting up the final displays throughout the Abbey in the week before the Coronation. "We often had only three- or four-hour windows in which to work before we had to stop to allow rehearsals, working late into the evening on the Friday when we were presented to The King and Queen," he said. Shane's wife, Candy, also provided catering for the team in the run-up to the Coronation.

### CORONATION TREE PLANTING

The Coronation inspired at least two sets of tree planting in our locality. On Sunday 7 May, a Coronation Orchard of 50 fruit trees was planted in the field below Stanford Village Hall, including apple, cherry, plum and pear. Amongst those sponsoring and planting their own tree in the orchard were Anthony and Alexandra Winnington of Shelsley Beauchamp (*Alexandra pictured below left*).



The floral decorations for the Coronation included 30 varieties of tulips, crab apple blooms, azaleas and rhododendrons as well as branches of trees planted by the late Queen and The Duke of Edinburgh. "The flowers reflected the real characters of The King and Queen; simple garden flowers that were seasonally British," said Shane, who was also in charge of the floral arrangements for the weddings of The King and Queen in 2005, and The Prince and Princess of Wales in 2011. "My aim was to make it all incredibly personal to them."



In addition, in Shelsley Beauchamp a King Charles Coronation Oak has been planted, supplied by Shelsleys Parish Council. It joined others already planted near the Village Hall for The Queen's Silver Jubilee. "We are very grateful to David Moore for giving permission to plant in his field," said resident Val Jones. "Thanks also to Rachel Wright who will water it in the coming year, and to Charlie Jones (*pictured near left*) for collecting and planting."





# THE CORONATION OF KING CHARLES III

## LOCAL CELEBRATIONS ACROSS OUR PARISHES

### CLIFTON UPON TEME LUNCH, CHURCH SERVICE AND BARBECUE



Dot Millward with members at the lunch

#### FRIENDSHIP CLUB LUNCH

Clifton's celebrations began on Wednesday 3 May.

The village's Friendship Club held a special Coronation Lunch in Clifton Village Hall, attracting dozens of members to mark the occasion.



Pat Snelling cuts the Coronation cake

#### CORONATION SERVICE OF CELEBRATION

On Sunday 7 May at Clifton's St Kenelm's Church, many residents attended an afternoon Coronation Service of Celebration.

The service was followed by a Loyal Toast to The King. Afterwards, attendees also enjoyed a beautifully decorated Coronation cake and refreshments.

A specially engraved Coronation commemoration stone has also been installed into the wall outside St Kenelm's Church, providing a permanent reminder of the historic occasion.



#### BARBECUE ON THE GREEN

Clifton locals also gathered on Saturday 6 May for a barbecue and disco, funded by the Parish Council and cooked by the Lion Inn. Cream teas were also enjoyed at St Kenelm's.

Organiser Mandy Henry said: "Thank you to Clifton Parish Council who allowed me to arrange the celebrations on the Village Green. Thanks to Simon, Andrea and the Lion Inn for providing the food. Thanks also to Ruth Wilson and the team at St Kenelm's for providing the cream teas and to Phil Nuttall, Pat Owen, Rachel Austin and everyone who provided gazebos to allow us to go ahead. Thank you Maurice Richards, Lyn Merrick and David who manned the sculpture tent. And thanks to Martine and Luke who helped dismantle the gazebos. Most of all, a big thank you to everyone who defied the damp weather and came out to celebrate!"



(L to R) Andrea & Simon (Lion Inn); Mandy Henry (Organiser); Penny & John Bowden (Chairman of Parish Council)



(L to R) Janet Brooks, Bridgette Manton, Chris House, Jenny Painter



Pat Snelling



(L to R) Maureen Billingham, Susan Taylor & Alfie Phillips





# THE CORONATION OF KING CHARLES III

## LOCAL CELEBRATIONS ACROSS OUR PARISHES

### THE SHELSLEYS PARISH PHOTO



On Sunday 7 May, around 150 residents from Shelsley Beauchamp, Shelsley Walsh and Shelsley Kings attended a village Coronation Drinks Party at the Village Hall. The Loyal Toast to His Majesty King Charles III was led by lifetime Shelsleys resident Brian Speyer (*front centre wearing bow tie*) who was born at his current home in Camp Lane in 1952, and christened at All Saints Church in the year of Queen Elizabeth II's Coronation.

A whole village photo, taken next to the Village Hall looking across to Shelsley Walsh, was then taken by Shelsley Beauchamp photographer Michael Whitefoot. The photograph will be framed and displayed inside the Village Hall in due course.

Thanks to the generosity of those attending the various Shelsleys Coronation events, a total of £1,220 was raised for All Saints Church, comprising £700 from the Shelsleys Ball, £350 from the Church Service and £170 from train rides in Shelsley Kings.



Photo © Michael Whitefoot





# THE CORONATION OF KING CHARLES III

## LOCAL CELEBRATIONS ACROSS OUR PARISHES

### THE SHELSLEYS CHURCH SERVICE AND DRINKS PARTY



#### CORONATION SERVICE

In the Shelsleys, Coronation Sunday began with a well attended Service at All Saints Church. There was an array of red, white and blue floral decorations, and youngsters made and wore crowns.

#### JUBILEE PARISH MAP UNVEILING AND DRINKS PARTY

Also on Sunday 7 May was the Shelsleys' Coronation Drinks Party and photograph, attended by villagers from across the three Shelsley parishes. As well as Champagne, canapés and socialising, a highlight was the unveiling of the Queen's Platinum Jubilee Parish Map, commissioned by the Parish Council and created by artist Diana Winsor in watercolour and ink, with every house individually drawn.

**Below right:** Artist Diana Winsor alongside the magnificent Shelsleys Parish Map. Giclee quality prints of the map, in different sizes, framed or unframed, can be ordered via Ian Carmichael, Giclee Fine Art Limited, call 07515 722091 or email [ian@gicleefineart.ltd.uk](mailto:ian@gicleefineart.ltd.uk) .



*Crowds throng the drinks party at Shelsleys VH*



*Brian & Jan Speyer*



*Rebecca Perry (L) & Diana Winsor*



*(L to R) Carole Warren, Claire Sutherland, William Sutherland*



*(L to R) Anthony Winnington, Andy Griffie, Helen Griffie, Helen Whitehouse*

Huge thanks go to all who contributed to the event, including: those who decorated the Hall; all canapé makers and Val Jones who coordinated them; the sponsors of the Champagne plus Rob Pound and Cassian Roberts for arranging; Brian Speyer for the Loyal Toast; all involved in the Parish Map including artist Diana Winsor, Louise Hutton and Holly Perks for the map details; Bridget Francis, Judie Welsh, Johnny Crabbe, Ann Hooper, Ian Wright and John Nicklin for their input; the Shelsley Walsh Hillclimb for their generous donation to print and frame the map; parishioners who gave extra sponsorship; Barry Hodgetts and Mel Williams for display materials; to Michael Whitefoot for the village photograph; and to Dave Bates and team for running the Social Club all weekend for all to enjoy.





# THE CORONATION OF KING CHARLES III

## LOCAL CELEBRATIONS ACROSS OUR PARISHES

### SHELSLEY BALL AND STEAM TRAINS; STANFORD BRIDGE



#### SHELSLEY KINGS STEAM RAILWAY

On Bank Holiday Monday 8 May, Michael and Helen Whitehouse of Shelsley Kings kindly opened up their fantastic miniature steam railway for locals to enjoy.

Despite the damp weather there was a great turnout, with the trains enjoyed by young and (only slightly!) older generations. Donations raised £170 for All Saints Church. Many thanks to Michael, Helen and all who supported the day.



#### SHELSLEYS BALL

The Shelsleys had begun its Coronation celebrations in fine style, with a special Coronation Ball held on Friday 5 May, in aid of All Saints Church. 70 people attended. Organiser Holly Perks confirmed: "We adorned the hall ceiling with swathes of gold fabric and fairy lights. We had photographs and a drinks reception upon arrival. Most incredibly Karen and John Webber kindly donated all of the champagne! We had canapés and grazing boards. DJ Dave Moore was on the disco. Anthony Winnington gave the Loyal Toast and we then all sang the National Anthem. Much fun was had by all."



As official photos of the Ball were not available at the time of going to print, look out for the July/Aug edition of *Teme Triangle* for full coverage!



#### STANFORD BRIDGE DANCE STUDIOS' CORONATION CELEBRATION

Young dancers of all ages at Attitude Dance Studios in Mill Farm, Stanford Bridge, attended a range of classes during Coronation week.

Pupils paid tribute to King Charles III with flags, crowns and costumes to celebrate the historic occasion.





## THE CORONATION OF KING CHARLES III

### LOCAL CELEBRATIONS ACROSS OUR PARISHES

#### LOWER SAPEY AND HARPLEY

##### LOWER SAPEY & HARPLEY TEA PARTY

Morning Worship at St Bartholomew's, Harpley on Sunday 7 May was followed by a beautiful bluebell walk.

Celebrations continued on Bank Holiday Monday 8 May with a Lower Sapey Tea Party held at the Church. Howard Rigby said: "As ever, the volunteer caterers put on a spread fit for a King. A pity he was busy, as we think he would have enjoyed it! A suitable fizzy drink, to toast His Majesty, was kindly provided by the Parish Meeting and a good time was had by all." Thanks to everyone in the community who helped with, or attended, this sociable occasion.



#### TEME VALLEY WILDLIFE GROUP: ALL ABOUT WILLOW

I visited my local church for a service on Good Friday and was struck by the simple beauty of a branch of pussy willow placed in a plain vase in front of the porch window. Palm Sunday has traditionally been the day for pussy willow, more properly named goat willow or *Salix caprea*, to enter churches. Willow sprays were once used as a substitute for palms on Palm Sunday and some churchgoers wore willow sprigs in their lapels when attending services on that special day.

Goat willow is a plant of damp places and is the commonest and most widespread type of willow growing in the British Isles. The graceful silvery buds that we call pussy willows are soft and tactile, and go on to develop into catkins. The buds appear in January, and by March the male form opens into a cloud of yellow pollen. Whilst in this stage they have been dubbed "goslings" because of their resemblance to newly hatched geese. Known elsewhere as the great willow or saugh-tree, in our local three counties it is more commonly referred to as the sally. The tree comes in separate male and female forms. Most willows are pollinated by the wind, but the pussy willow produces nectar to attract bees and flies. These insects aid the process and find the goat willow to be an important early source of both nectar and pollen. Goat willow is a native tree and is known as a pioneer species - one which quickly colonises a newly cleared area. Alongside birch and aspen, it was one of the first trees to grow in the tundra of Britain after the last ice age. Goat willow wood makes good charcoal and was formerly valued by makers of gunpowder. However, it is not good as firewood because it crackles violently when burnt. It was used for wattle, part of the 'wattle and daub' of latter-day house construction. Finally, where did the name goat willow come from? It refers to its first known illustration, in Hieronymus Bock's *Herbal* of 1546, in which the tree is pictured being browsed by goats.

Next meeting of the Teme Valley Wildlife Group is Thursday 8 June, Stoke Bliss and Kyre Village Hall, WR15 8RR, 7.30pm. Speaker is Alison Wakeman on 'Awareness and importance of bees'. All welcome, £2 entry. Visit [www.temevalleywildlife.co.uk](http://www.temevalleywildlife.co.uk).

*Stephanie Mcroft*

#### RIP DAVID HOLLOWAY

We are extremely sad to hear that David Holloway who lived at Churchfields, Shelsley Beauchamp passed away at home on 3 May 2023, aged 79.

David had lived in Shelsley all his life, starting at the Lower House Farm with his parents. He was an agricultural contractor and serviced farms across the length and breadth of Worcestershire and surrounding counties.

David and his wife Ann built Churchfields in 1984, where they were extremely happy together and, being just across from the church, he was always on hand to change the clock when needed plus trim and tidy the churchyard.

David will be greatly missed by his family and friends.



## LOWER SAPEY NEWS

This has been a really busy and exciting month for us all, with the Coronation events throughout the country which we will never forget.

They contrasted so vividly with those of 1953 and indeed it was another age. The war had not long been over, the days seemed dark and dreary and there was still some rationing. The Coronation of Queen Elizabeth II brought great joy at least for that summer. Now, the champagne and prosecco may be flowing, exotic cakes are being baked, as well as soggy spinach quiches; and there was much celebration on the Coronation of her son, now King Charles III. However, there are still dark days, food banks exist, many people struggle to feed their families, heat their homes, or to pay impossible mortgages and rents. There are still homeless on some streets. The poor weather hasn't helped to lift us completely into a sunnier Britain, but we did have some great celebrations over the extended weekend.

Here in Harpley, we held a happy Coronation service on Sunday 7th, followed by a walk through the bluebell woods, which about fifteen fairly fit and active people attended. Thanks go to Pat Savage and her family who arranged this and the half-time break with tea and biscuits. On 8 May, we held a village party which was also well attended. There were some beautiful cakes and excellent sandwiches and snacks, washed down with the Champagne provided by the Parish Meeting. Being a very small community, we do not qualify for a Parish Council, but have an active Parish Meeting Group, which tries to improve the facilities in the area. We are a close community and they work hard to achieve this.

The big event in Harpley in May was the Annual Plant Sale on 27 May and a report on this will follow in the next edition. We also hope to celebrate the planting of the Coronation hedge at St Bartholomew's and to construct a fire pit in the adjacent quiet area. We hope this could be used for future celebrations and events, should the weather be suitable! The grass will soon be cut, as No-Mow-May has proved to be wetter than usual.

## CLIFTON FRIENDSHIP CLUB

Dot Millward's report as Chairman:

The coffee morning on 22 April was very well attended and thank you to all who helped and attended. I think everyone had a lovely time and we raised £380. We had a wonderful Coronation lunch for members and guests. The team worked very hard to provide lovely food for over fifty people. The desserts were to die for (MG). Our meeting later in May will be the AGM and a report will appear in the next edition. There will be some readings from the archives to entertain everyone.

On 7 June, we welcome the return of Adrian James, talking about his garden visits and showing slides. On 21 June, there is a change of venue as we will be visiting Whitlunge Gardens and tea rooms. Time of departure from the Village Hall tba. All visitors welcome to our meetings.

We have booked a table at the forthcoming WI Tabletop Sale at Clifton Village Hall on 10 June, for produce. Profits are to be shared between Harpley Church and our Friendship Club.

## CHURCH SERVICES IN ST BARTHOLOMEW'S FOR JUNE

NB Please check all timings nearer the dates as they may be subject to change:

- Sunday 4 June Evensong at 6pm
- Tuesday 6 June Soup and Silence at 12 noon
- Sunday 18 June Anglican communion service at 10.30am
- Sunday 25 June There will be a Summer Festival with lots of activities, starting at 2.30pm. This will include the Circle Service, finishing 5.30pm. As usual there will be tea and cake!

Housekeeping for June is in the hands of Sue Elson. Thank you Sue. (More helpers are still needed).

The Ladies Bible Group will hopefully start again, on Tuesday 13 June at 2pm. Venue to be arranged. We also hope to have a new text for study by then.

The Mobile Library will call on Friday 16 June at 10.20 and 10.40am. Please try looking at the County Library web site which lists many events and exhibitions.

Well, I haven't heard the cuckoo yet, nor did I hear it here last year. Maybe it has read about climate change and is staying home now. However, let's hope we can have a glorious summer and at least, in my case, get some work done in my overgrown and uncared for garden. Have a wonderful June.

*Margaret Griffiths*

## RIP JEAN NUTTALL

It is with deep regret that we mark the passing of former long-time Shelsley Beauchamp resident Jean Nuttall, a great friend and colleague to many in and around the parishes.

The go-to person to get things done, Jean was involved in many village activities as well as Church matters, from singing in the All Saints choir for more than 40 years and raising money for the homeless, to being an active member of the church cleaning and floristry rotas and selling tickets for parish events. Jean was the local postmistress for many years and a Church Warden. As well as taking many happy holidays with local friends, Jean also enjoyed indoor and outdoor bowls, travelling around various clubs playing in competitions. With failing health in latter years she was looked after in a nursing home in Kidderminster, still visited regularly by her close friends, who often took her to Church when she was able. She will be greatly missed.

Jean's funeral will be held at All Saints Church, Shelsley Beauchamp on Thursday 8 June at 11.30am and afterwards at Shelsley Village Hall. All welcome.

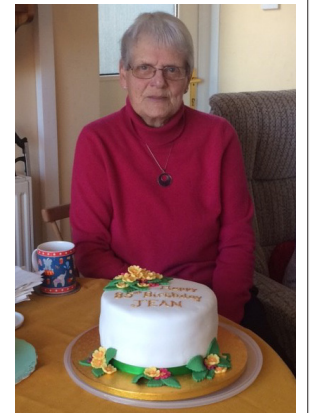


Photo © Caroline Whittaker

**SERVICING & REPAIR**  
ALL TYPES OF  
**GARDEN MACHINERY**



**BRIAN BUTLER**  
Clifton-on-Teme  
07929 014804 Daytime  
01886 812538 Evening

COLLECTION and DELIVERY

**NICK CHAMPION**  
PROPERTY | AUCTIONS | AGRICULTURE | PROFESSIONAL

**YOUR LOCAL PROFESSIONAL, INDEPENDENT RESIDENTIAL & RURAL PROPERTY SPECIALIST.**

- SALES
- AUCTIONS
- LETTINGS
- ACQUISITIONS

**NICK CHAMPION LTD**  
16 Teme Street, Tenbury Wells, Worcestershire, WR15 8BA  
Tel: 01584 810555 | Email: info@nickchampion.co.uk  
www.nickchampion.co.uk

**RED KITE**   
**Pest Control**  
&  
**Wildlife Management**  
*Combining Tradition and Innovation*  
For all your local Pest Control requirements  
Flexible Contracts ~ Individual Treatments  
BPCA and NPTA Qualified

All INSECT Pests  
All RODENT Pests  
All WILDLIFE Pests

Specialized Trapping service  
Pest Prevention and Proofing  
Cleansing, Decontamination, Disinfection

Free Advice  
Free no obligation Quotations

Telephone **Andy Staples** on:  
**07977 044987 / 01886 832730**

**TVA**  
**TEME VALLEY ACCOUNTS**

Bookkeeping VAT  
PAYE Sage Accounting  
Tax Returns Draft Accounts

Contact: Claire on  
Tel: 01584 881708 or 07731 010099  
Email: Claire.tva-accounts@outlook.com

*Party / Business / Reception / Function*  
**CLIFTON VILLAGE HALL**  
Three meeting rooms (2 – 120 people)  
Modern, well equipped kitchen  
with crockery, glasses etc.  
Good parking in central location  
**Bookings: 01886-812464 / 812238/  
812969 / 812335 or  
hallshire.com**

**PC Troubles?**

- PC problems solved
- Broadband connection set-up
- Home network set-up
- Printer and camera problems solved
- Website design service
- Basic PC training at home

*For friendly and local advice and to book a free consultation contact*

**Bernadette Higgins** on 07813 302 504  
or e-mail: [apctrouble@gmail.com](mailto:apctrouble@gmail.com)

**LUXURY CATTERY**  
Call Lesley on 01886 821154

- New luxury Cattery set in beautiful open countryside. Run by genuine cat lover.
- Fully Licensed and Insured.
- All chalets have heated bedrooms and spacious play runs.
- Special needs and diets catered for.

**Kitty's Cattery**  
Coronation Cottage, Broadwas (Nr. Martley), Worcester, WR6 5NT  
[www.kittyscattery.co.uk](http://www.kittyscattery.co.uk) [kittyscattery@hotmail.co.uk](mailto:kittyscattery@hotmail.co.uk)

**TAYLORS**  
**CONSERVATORY CARE**

22 Saxon Close  
Clifton upon Teme  
Worcester WR6 6DL  
Mobile: 07801 281821  
Tel: 01886 812424  
Fax: 01886 812954

**Sales • Service • Repair**  
SUPPLY • INSTALLATION • AFTER SALES CARE • RE-ROOFING

We supply and fit:  
Aluminium Windows and Doors • uPVC Windows and Doors  
Hardwood and Softwood Windows and Doors  
Conservatories in Hardwood / uPVC / Aluminium  
PILKINGTON APPROVED INSTALLERS  
Agents for Compton Garages & Alton Greenhouses  
Please phone for Free Quotation • Fence Registration No. 18796

*Open 7 days a week,  
Our Menu offer a variety of dishes.  
Locally sourced meat – Knightwick  
butchers.  
Choose from a range of traditional pub  
classics.  
Home-made pies  
In house beer battered cod.  
To book a table  
telephone 01886812226  
Website:  
[thenewinncliftonupon teme.co.uk](http://thenewinncliftonupon teme.co.uk)  
Facebook:  
The New Inn Clifton-upon-Teme*

**Self Storage Units**

20ft Shipping Containers  
at Stanford Bridge  
Under cover  
Security lighting

Please contact Alex  
on 07973 624318  
or 07966 865015



# SHELSELY VILLAGE HALL FOR HIRE

Set in beautiful surroundings  
(with french windows leading onto terrace)

Close to the river and hillclimb  
Well equipped kitchen • Bar available  
Ideal for meetings, dances, parties etc.

**VERY REASONABLE RATES**

Contact for bookings  
**Dave Bates 01886 812551**  
[www.shelsleys-vh.uk](http://www.shelsleys-vh.uk)



Naturally beautiful & fragrant  
British flowers for all occasions  
kate@camomilecornflowers.co.uk  
01886 812184 07887 706147



## YOUR LOCAL OPTICIAN

18 Teme Street, Tenbury Wells, Worcestershire  
**01584 811445**



Contact: Juliet Twinberrow  
Tel: 01886 821408 Mob: 07772 799754  
Email: info@housevet.co.uk  
[www.housevet.co.uk](http://www.housevet.co.uk)



Liz Whittaker - lady chauffeur  
**Affordable Comfort Travel in Style**  
Transport solutions for up to eight passengers.  
All air and seaport. Wedding and sporting events.  
Local and National journeys. 07814 006179

## Paul the Painter

Your local professional Painter  
& Decorator

All interior & exterior work, from a single  
room to a whole house.

Tel 07759 298754  
E-mail paulthepainter23@msn.com

## Are Your Locks Behaving Badly

Check A Lock Fix A Lock

- No Call Out Charge •
- Free Onsite Estimates •

All Types of Door & Window Locks  
Opened • Repaired • Serviced  
Jammed Doors • Faulty Locks  
Lost • Broken or Poorly Cut Keys  
Wooden-UPVC Door & Window  
Multi-Point Lock Repair Specialist  
Doors Adjusted & Realigned  
No Job Too Big or Small  
For More Advise Call Stewart

**THE LOCKSMITH**  
01905 570 999 07871 44 20 11  
Local Reliable Independent Locksmith  
[www.locksmithworcestershire.co.uk](http://www.locksmithworcestershire.co.uk)



For an Affordable  
& Reliable Electrician  
Choose REWIRED!

The Power Behind  
Teme Valley...

01886 853 011  
07421 748 288  
[www.rewired-worcester.co.uk](http://www.rewired-worcester.co.uk)



OPEN FOR BEER SALES 7 DAYS  
BAR OPEN FOR FOOD AND DRINK  
FRI 5PM / SAT & SUN 1PM  
LIVE MUSIC EVERY SATURDAY

FOR MORE INFO ON TIMES AND SPECIAL EVENTS  
FIND US ON FACEBOOK AND INSTAGRAM  
[WWW.SPILSBURYANDJONES.CO.UK](http://WWW.SPILSBURYANDJONES.CO.UK)

FOR PRIVATE HIRE OF THE WHITE PHEASANT 07966 294032



Laurence Green - 07809 495848  
laurence@theorchardtammers.co.uk  
[www.theorchardtammers.co.uk](http://www.theorchardtammers.co.uk)

WE FIX FRUIT TREES & MAKE WILDLIFE WELCOME  
1 garden tree or 10 acres  
Gardening for wildlife  
Help, advice and training  
Great present idea!

## Teme Valley Window Cleaning

We are a local eco-friendly window cleaning company providing a  
professional and reliable service  
Frames & Sills cleaned as standard

Call Mark 07776 254710

[temevalleywindowcleaning@gmail.com](mailto:temevalleywindowcleaning@gmail.com)

- T.V. •Video •Audio
- Electronic Repairs
- Microwave Ovens

**DAVE PARKER**  
01885 410711  
Mobile 07790 423158

Prompt efficient service at competitive rates

# Hair by Jess

07779 621229

Clifton Upon Teme

Instagram page: #hairbyjessmorris



## Teme Valley Fencing and Garden services

Landscaping, Fencing and Gardening  
Free no obligation quotes, contact Chris for more information.  
07512791977  
temevalleyfencingandgardenservices@outlook.com  
Facebook - @temevalleyfencingandgarden

# COLIN GRIFFITHS

## GROUNDWORKS CONTRACTOR

MARTLEY, WORCESTERSHIRE

Main Sewer Connections  
Septic Tanks  
Foundations to D.P.C.  
Concrete & Tarmacing  
Site Clearance  
Foul & Storm Drainage etc.

*"A Business built on a solid foundation"*

For all your private & industrial groundworks

**For a personal and efficient service please contact Colin on,**

TEL. 01886 821283 MOB. 07836 772501

## LEE JAMES CARPENTRY & JOINERY

Qualified and experienced in all aspects of carpentry

- ☐ Kitchens supplied and fitted
- ☐ Roofing
- ☐ 1<sup>st</sup> and 2<sup>nd</sup> Fix
- ☐ Renovations – old & new
- ☐ Oak timber frames
- ☐ Plastic fascia & soffits
- ☐ Loft conversions
- ☐ Doors & windows

**Quality and Satisfaction Guaranteed**

For free quotes, competitive prices and a professional service phone:  
**(01886) 821151**  
**07779 073870**

## WORCESTERSHIRE WILLS

Est. 2013  
Clare Burden

**MEMBER OF THE INSTITUTE OF PROFESSIONAL WILL WRITERS**

**SPECIALISING IN WILL DRAFTING AND POWERS OF ATTORNEY**

**APPROACHABLE AND FRIENDLY**

**COMPETITIVE RATES**

**FULLY CRB CHECKED**

**HOME VISITS AND EVENINGS IF REQUIRED**

Practising as a successful family lawyer for 8 years until taking time off to have a family, Clare has now set up her own company providing private client services.

To arrange a friendly and confidential consultation, Contact Clare Burden

**T. 01299 879826**  
**M. 07855 350245**

**E. clare@worcestershireswills.com**  
**worcestershireswills.com**

## Chimney Sweep

**Andy Johnson**

- Certificate issued
- Weekend/Evening sweeps available
- Traditional brush/Power sweep

01886 821933 / 07798 790913

**ICS** REGISTERED MEMBER  
www.instituteofchimneysweeps.co.uk

**FIRE KILLS YOU CAN PREVENT IT**

## BILLS GARDEN GATES AND TIMBER PRODUCTS

- Garden Furniture
- Log Stores
- Chicken Runs
- Aviaries
- Storage
- Decking
- Fences
- Your Choice

...and more made to order locally from FSC treated or untreated timber. Bespoke and renovations also undertaken

For more information contact Bill

- Tel: 07580 274999
- Great Witley 01299 896681
- Website: [www.billsgardengates.co.uk](http://www.billsgardengates.co.uk)
- Email: [billsgardengates@btinternet.com](mailto:billsgardengates@btinternet.com)

[www.facebook.com/billsgardengates](http://www.facebook.com/billsgardengates)

## Eclipse HomeCare

making a difference

"Award Winning" Care Services

Live-in Care delivered daily in your own home and designed to meet your needs

Hourly Care delivered daily in your own home and designed to meet your needs

Specialist Support • Dementia • Stroke • Parkinson's • Mobility • Medication • Hospital discharge • Washing • Dressing • Shopping • Cooking • Companionship • Respite • Days out & Holidays

Live in Care safest alternative to a residential home

Outstanding  
Good  
Good  
Care Quality Commission

If you would like to understand more about your options, the costs and funding opportunities then please give us a call

- Respected and trusted business, established over many years.
- Award winning teams of dedicated local caregivers, many having been caring for the same clients for years.
- CQC inspected and rated 'Outstanding', 'Good' and 'Good'.
- Rated No 1 in Worcestershire for three years running by Homecare.co.uk
- Experienced caregiver support team with modern digital systems to ensure reliable and efficient communication.
- NHS and Worcestershire County Council registered.

01905 641 070 (9 am - 5 pm seven days a week)  
[www.eclipsehomecare.co.uk](http://www.eclipsehomecare.co.uk)

## Physio In The Sticks

[www.physiointhesticks.co.uk](http://www.physiointhesticks.co.uk)

**Physiotherapy 7 days a week**

**Local home visits available**

**Let us help you get back to what you enjoy doing!**

**Amanda Stephenson**  
Chartered Physiotherapist

**07398 495819**

[info@physiointhesticks.co.uk](mailto:info@physiointhesticks.co.uk)

hpcp registered [www.hpcp.org](http://www.hpcp.org)

## Perks Accountancy Ltd

- Bookkeeping Services
- Personal Tax Returns
- VAT Returns
- Payroll
- Management Accounts
- Year End Accounts
- Corporation Tax Returns
- Budgeting & Forecasting

**Rachel Perks**  
ACMA CGMA FIAB  
Tel: 07484 161382  
[rachel@perksaccountancy.co.uk](mailto:rachel@perksaccountancy.co.uk)  
[www.perksaccountancy.co.uk](http://www.perksaccountancy.co.uk)

Laugherne Farm House, Martley  
Worcestershire, WR6 6QB



# Church Matters

by Jude Damerell



The Coronation of King Charles III took place on 6 May. Much fun was had in our parishes over that weekend, as celebrations were held to mark the historic event. The Coronation Service at All Saints Church, Shelsley Beauchamp, was very well attended.

Led by the Rev Jen Denniston, the service was joyful and lively, but with moments of quiet reflection and solemnity.

The accession of a new monarch is framed in a deeply religious context, the Coronation Service being a service of Christian worship. It includes the celebration of Holy Communion and the consecration of the new monarch with holy oil. Judging by the millions who wanted to watch the proceedings, in person or through the media, it seems that, despite the secular nature of our society, we are still drawn to the spiritual side of life, captured here in the rituals and ceremony which surround the monarchy. Those who last year filed past the coffin of the late Queen Elizabeth II were, it seems, similarly moved by the experience. Many who were interviewed described it as a "spiritual experience". Birmingham Cathedral had over 10,000 visitors in the days following the Queen's death, and churches over the country (including here in the Teme Valley) provided somewhere for those wishing to grieve and reflect on the nature of loss.

Another interesting aspect that has followed the Coronation has been the focus on the King's commitment to serve God and the people. The King said in the Coronation Service, "In His name and after His example, I come not to be served but to serve". This is a key tenet of the Christian faith. There is a rich tradition of service in this

country and that is demonstrated clearly here in our area. Every month *Teme Triangle* records the many folk who give freely of their time and talents in various ways - and in so doing they are serving others. I hope you all enjoyed yourselves very much if you were able to attend any of the many local church services and/or other celebratory events.

A note to those who are unable to attend church and would like to receive Holy Communion - our clergy team would always be most willing to take Communion to anyone in their home. Please contact Jen Denniston (07783 432017 / jendenniston@gmail.com) or Jill Smith (07513 298782 / jill.together@gmail.com) if you would like that to be arranged.

Jude Damerell

**All Saints  
Shelsley Beauchamp**  
*Sing for Joy*  
**Sunday  
11th June 2023**  
**10.30am**  
Communion  
**Hymns and Pimms  
Celebration Service**  
Come and sing your favourite  
hymns and enjoy a glass of  
'Shelsley's own Special Pimms'  
secret recipe. Outdoors if the  
weather is fine.



**CHURCH SERVICES IN CLIFTON, THE SHELSLEYS  
AND LOWER SAPEY (HARPLEY)**

## June 2023

### Sunday 4<sup>th</sup> June

**8.00am** MAC Service, St Andrews, Shelsley Walsh

**10.30am** Morning Prayer, St Kenelm's, Clifton

**6.00pm** Evensong, St Bartholomew, Harpley

### Saturday 10<sup>th</sup> June

**10.00 – 4.00** Wedding Festival, All Saints, Shelsley Beauchamp

**4.00pm** Renewal of Wedding Vows, All Saints, Shelsley Beauchamp

### Sunday 11<sup>th</sup> June

**10.30am** Hymns and Pimms, Holy Communion, All Saints,  
Shelsley Beauchamp

### Sunday 18<sup>th</sup> June

**10.30am:** Holy Communion, St Bartholomew, Harpley

**6.30pm** Evensong, St Kenelm's, Clifton

### Sunday 25<sup>th</sup> June

**2.30-5.00pm**, Midsummer Celebration, with Circle Service at **4.00pm**  
St Bartholomew, Harpley

### Pop-In Parish Prayers

**All Welcome**

**Tuesday 6<sup>th</sup> 12.00 -1.00** Soup and Silence, St Bartholomew, Harpley

**Monday 19<sup>th</sup> 9.30am**, St Kenelm, Clifton

**Wednesday 21<sup>st</sup> 9.00am** All Saints, Shelsley Beauchamp

*Holy Communion at Heaton House, Martley every 2<sup>nd</sup> and 4<sup>th</sup> Wednesday at 10.15am  
and every 1<sup>st</sup> and 3<sup>rd</sup> Wednesday via our YouTube channel – wvrtlive1*

All services and timings are subject to review and amendment – please check the website  
for updates: [www.achurchnearyou.com](http://www.achurchnearyou.com)

### CONTACTS FOR ALL SAINTS CHURCH, SHELSLEY BEAUCHAMP

Christenings, weddings, funerals:

Rev Jen Denniston 07783 432017 / jendenniston@gmail.com

Jill Smith 07513 298782

Church Wardens: Kate Hurst 01886 812184 / kathrynshurst@bopenworld.com

Holly Perks 01886 812369 / hollyperks@me.com

### CONTACTS FOR ST KENELM'S CHURCH, CLIFTON

Christenings, weddings, funerals:

Rev Anne Potter 01886 832355 / revannepotter@gmail.com

Other contacts: Jackie Gilbert 01886 812471 / gmjgilbert40@gmail.com

Anne Gayden 01886 812448 / annegayden@hotmail.co.uk



## CALENDAR OF EVENTS

### June

- 3 Christian Aid Big Breakfast, Old House (20 The Village), Clifton, 9.30-11.30am
- 3-4 Shelsley Walsh Hill Climb: Best of British weekend
- 7 Clifton Friendship Club with speaker on garden visits
- 8 TVWG meeting with speaker on bees, Stoke Bliss & Kyre VH, 7.30pm
- 9 Volante Strings 'Music for Strings' concert, St Mary's Church Stanford, 7.30pm
- 10 Wedding Dress Festival, All Saints, Shelsley Beauchamp, 10am-4pm
- 10 Clifton WI Coffee Morning & Tabletop Sale, Clifton VH, 10.30am-12noon
- 10-11 Gardens of Wichenford Open Weekend, 13 open gardens, 11am-6pm
- 11 Open Garden & Tea for Christian Aid, Ayngstree House, Clifton, 2.30-5pm
- 13 Clifton WI Meeting with posy-making, Clifton VH, 7.30pm
- 17 Shelsley Coffee Morning and bring & buy, Shelsleys VH, 10.30am-12noon
- 21 Clifton Friendship Club, visit to Whitlunge Gardens and tea rooms, time tba
- 24 Illustrated talk by author Jerry Johns: '*Jeanne's War*', Clifton VH, 6.30pm
- 24 Shelsleys Tennis Tournament finals, local courts
- 25 Lion Inn charity pub quiz, Lion Inn, Clifton, 7pm

### July

- 1 Shelsley Walsh Hill Climb: Bike Bonanza
- 2 Shelsley Walsh Hill Climb: Vintage Meeting
- 15 Shelsley Coffee Morning and bring & buy, Shelsleys VH, 10.30am-12noon
- 22-23 Shelsley Walsh Hill Climb: Classic Nostalgia weekend
- 30 Lion Inn charity pub quiz, Lion Inn, Clifton, 7pm

## USEFUL PARISH CONTACT DETAILS

### Shelsley Parish Council Secretary

Jan Speyer shelsleyspc@gmail.com 01886 812444

### Clifton Parish Council Secretary

Michelle Alexander macebearer69@gmail.com 01886 884195

### District Councillor

Caroline Palethorpe caroline.palethorpe@malvernhillscd.net 07974 966412

### County Councillor

David Chambers dchambers2@worcestershires.gov.uk 07400 590 711

## THE GARDENS OF WICHENFORD 2023

Saturday 10 & Sunday 11 June 11am - 6pm

Have a great time visiting 13 wonderful gardens, set in beautiful north-west Worcestershire countryside. Lunches – teas – plants – art exhibition

All proceeds to local charities

£7 ticket covers both days. Children free. Cash only please

More details at: [Gardensofwichenford.blogspot.com](http://Gardensofwichenford.blogspot.com)  
and: The Gardens of Wichenford on Facebook

Follow event signs from A44 and A443. Easy parking



## SHELSELEY WATERMILL BACK IN ACTION AT OPEN WEEKEND

Hundreds of visitors saw engineering history in action at Shelsley Water Mill's open weekend in mid-May.

Located at the foot of the Shelsley Walsh Hillclimb, there has been a water mill on the site since 1308. The current mill remained part of the Teme Valley farming community until the early 1900s. Today the lovingly resored site is the only working, water-powered corn mill in Worcestershire.

The event, run by Shelsley Water Mill Society, was held as part of the National Open Mills Weekend. As well as seeing the mill in action grinding flour, visitors could enjoy displays of vintage vehicles, traction and steam engines.



Donations received during the weekend are being put towards the site's ongoing restoration by a team of volunteers.

Louise Hutton, from Shelsley, visited on both open days with her family. She told *Teme Triangle*: "It was a lovely sunny weekend with a great turnout of people on both days. The water mill really is a fascinating sight to see, in beautiful surroundings!"

Pictured right is Shelsley resident Nick Thompson, admiring a 1933 Austin London taxi owned by John Fletcher from Clifton upon Teme. Nick remembers riding in these taxis as a young child in London.

For more details about the mill, visit [www.shelsleywatermill.com](http://www.shelsleywatermill.com).



- Estate & Letting Agents
- Chartered Surveyors & Valuers
- Planning Consultants
- Auctioneers
- Land & Estate Management
- RICS Registered Valuers
- Landlord & Tenant Negotiations
- Basic Payment Scheme & Associated Matters
- Commercial Property Consultants

Robert Parry FRICS FAAV  
Richard Banks MRICS MARLA MNAEA  
Tim Gaston BA (Head of Residential Agency)  
Nick Jethwa MRICS

T: 01299 896 968  
E: [ggb@gherbertbanks.co.uk](mailto:ggb@gherbertbanks.co.uk)  
[www.gherbertbanks.co.uk](http://www.gherbertbanks.co.uk)

The Estate Office · Hill House · Great Witley · Nr Worcester · WR6 6JB



Contributions for the next (July/August 2023) edition by Friday 9 June 2023 please to: [editortemetriangle@gmail.com](mailto:editortemetriangle@gmail.com)

Printed by Orphans Press of Leominster Tel: 01568 612460